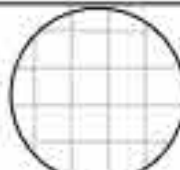
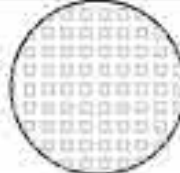
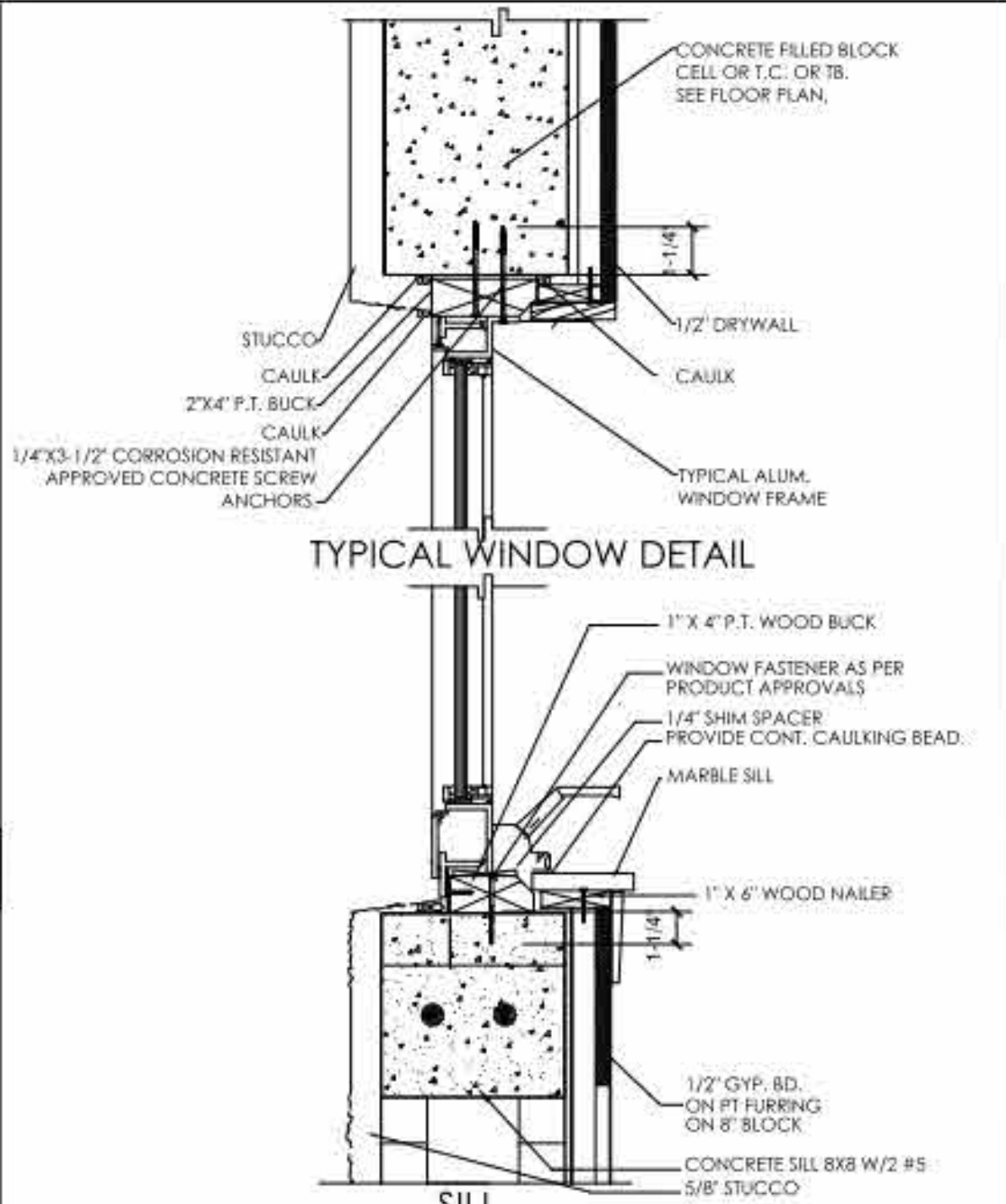
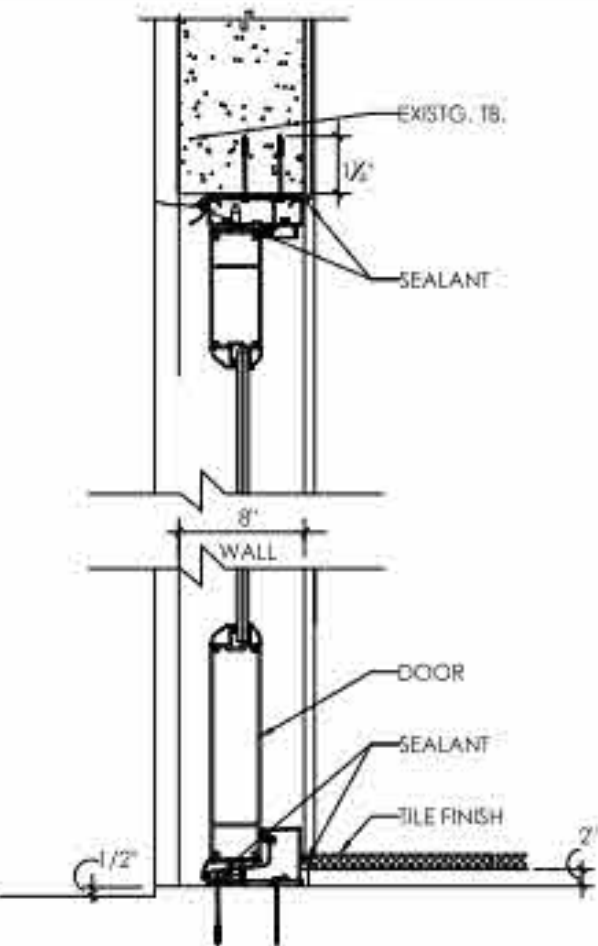
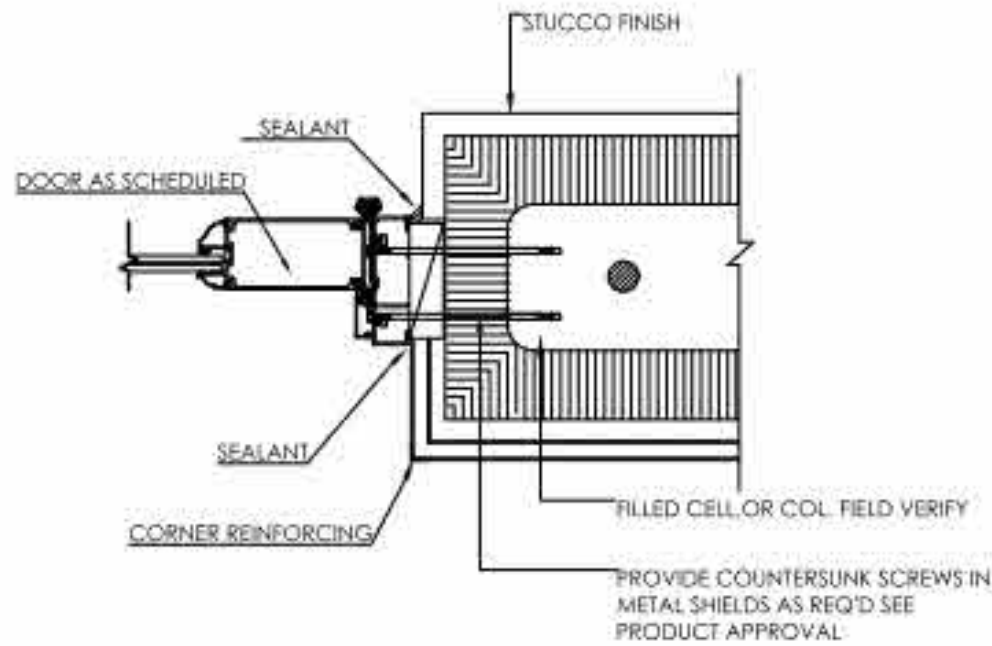


| FLOOR FINISH SCHEDULE   |       |                                  |              |   |
|---|-------|----------------------------------|--------------|---|
| LEGEND  | LABEL | LOCATION                         | DESCRIPTION  | NOTES   |
|    | FF-01 | KITCHEN, LIVING, DINING, BEDROOM | CERAMIC TILE | SEE FLOOR PLAN FINISH FOR LOCATIONS OF USE. INSTALL IN ACCORDANCE TO MANUFACTURER'S SPECIFICATIONS. |
|    | FF-02 | BATHROOMS                        | CERAMIC TILE | SEE FLOOR PLAN FINISH FOR LOCATIONS OF USE. INSTALL IN ACCORDANCE TO MANUFACTURER'S SPECIFICATIONS. |
| <ul style="list-style-type: none"><li>ALL NEW SOUNDPROOF SHALL BE WHISPERMAT OR SIMILAR</li><li>ACOUSTICAL LINING TO COMPLY WITH FLORIDA BUILDING CODE 2017</li><li>MINIMUM STC RATING PER FBC 2017 = 50 MUST BE PROVIDED</li></ul> |       |                                  |              |   |



- IF THE DESIGN PRESSURES IN THE WINDOW DOES NOT EXCEED 65 P.S.F., SECURE THE 2" WOOD BUCK TO THE STRUCTURE USING 1/4" X 3 1/4" CORROSION RESISTANCE APPROVED CONCRETE ANCHORS WITH A MINIMUM EMBEDMENT OF 1 1/4" @ 16" O.C. (6" FROM THE ENDS) ON 3000 P.S.I. CONCRETE AND @ 16" O.C. (6" FROM THE ENDS) ON ASTM C-90 CONCRETE BLOCKS OR SECURE THE WINDOW DIRECTLY TO THE STRUCTURE WITH 1/4"X3 1/4" CORROSION RESISTANT APPROVED CONCRETE ANCHORS WITH A MINIMUM EMBEDMENT OF 1 1/4" SPACED AS IT IS ON THE NOTICE OF ACCEPTANCE. A NOMINAL 1"X3" P.T. WOOD SPACER SHALL BE USED BETWEEN THE WINDOW AND THE STRUCTURE BUT THE EMBEDMENT IN THE CONCRETE BLOCK SHALL REMAIN TO BE 1 1/4" MIN.
- ALL 2"X WOOD BUCK END/OR 1"X3" WOOD SPACER SHALL BE PROPERLY CAULKED.
- REFER TO THE INSTALLATION INSTRUCTIONS FOR THE SPECIFIC PRODUCT BEING INSTALLED AND SHIM, LEVER, AND SQUARE TO ENSURE PROPER OPERATION.
- FILL VOID BETWEEN WINDOW AND WOOD BUCK WITH INSULATION, BEING CAREFUL NOT TO BOW WINDOW FRAME.
- APPLY A CONTINUOUS BEAD OF URETHANE SEALANT AROUND WINDOW. CHECK MANUFACT. RECOMMENDATIONS FOR SURFACE PREP., APPLICATION, AND INSTALLATION.